

# CONFINED SPACE RESCUE MADE AFTER

On Tuesday August 20th at 1300 hours, FIRECOM received a call for a wall collapse at Main Street and High Street in Port Washington.

rival of 8502 assistant chief Cole at 1301, it was reported that one victim was trapped under the collapsed north foundation wall of the con-

Shields Hardware Store that was gutted by fire in 1991.

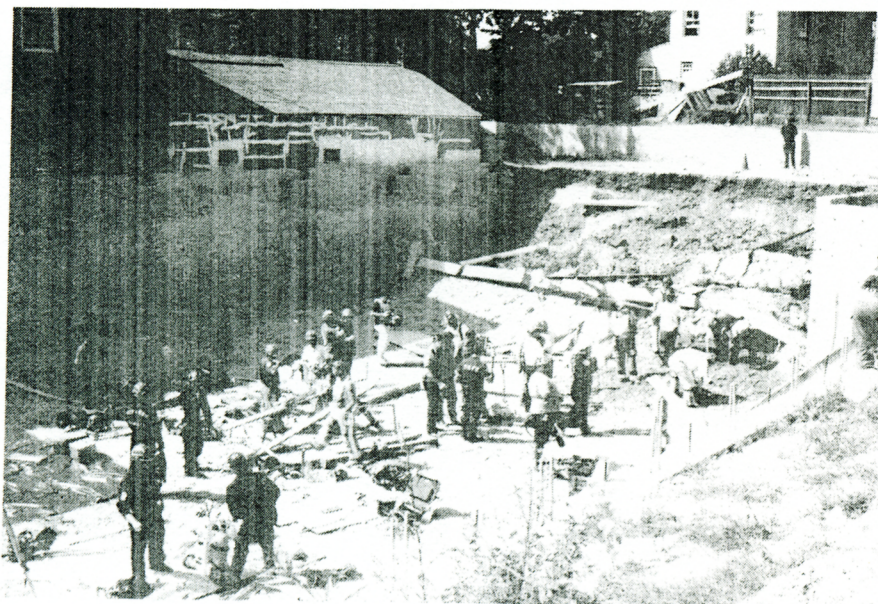
Incident command was immediately implemented with 8502 in command. At

scene. NCPD ESB had been requested by the Port Washington PD. A general alarm was sounded bringing all PWFD ambulances to the scene for triage and transport. All available firefighters were requested to respond to Flower Hill Hose Company for standby.

The first arriving fire officers on the scene were Lts. Walter Martinek and James Penrose, both of whom had recently completed the ROCO confined space rescue course. Lts. Martinek and Penrose were requested by command to enter the excavated foundation area and command the sector operation in the excavation until confined space units arrived. EMS units were dispatched into the site for patient assessment. When the wall collapsed (approximate dimensions were 10' X 25' X 12" thick) it fortunately snapped in half on a small mound of dirt/sand. This allowed for a 1-inch opening for muffled

communication to the victim. PWFD fire medics were able to squeeze a non-rebreather mask through the opening and provide oxygen to the victim for the entire duration of the collapse. All oxygen bottles were staged at the scene, and additional bottles were requested from Chief Fire & Safety in Port Washington.

FIRECOM advised command that confined space teams from the Syosset and Bethpage fire departments were responding to the scene. They were advised by command of the size-up and situation at the scene and were prepared to go to work upon their arrival at 1335 hours. Syosset, led by 5801 assistant chief Dennis Hendrickson and Bethpage, led by car 4 assistant chief Wall teamed up at the scene to commence a grueling and difficult rescue. 5801 Assumed confined space command in the excavation area. The teams ruled out moving



FIRECOM alerted the Port Washington fire department for a Signal 8 (which brings out three engines, two ladders and an ambulance). Upon ar-

struction site. Two other workmen had escaped the collapse prior to the third worker being pinned. The site of the collapse was the former

1302, FIRECOM was requested to dispatch the closest confined space rescue team and a Nassau County police helicopter to the